

2024 EDITION

School Year Gun Violence

Gun Violence Incidents & Trends in
K-12 & Higher Education



Intro



Gun violence on school campuses has garnered the attention of millions of people across the country and around the world. As people return to campuses as students, faculty and staff, parents, event attendees, and visitors, so does the concern for their safety.

Understanding gun violence as a whole, and on campuses is key to addressing it more successfully.

Keep reading to learn more about the data collection methodology in the Gun Violence Research Center.

Table of Contents



04 / Key Stats

08 / Gun violence incidents by geography

09 / Notable incidents

11 / Types of gun violence

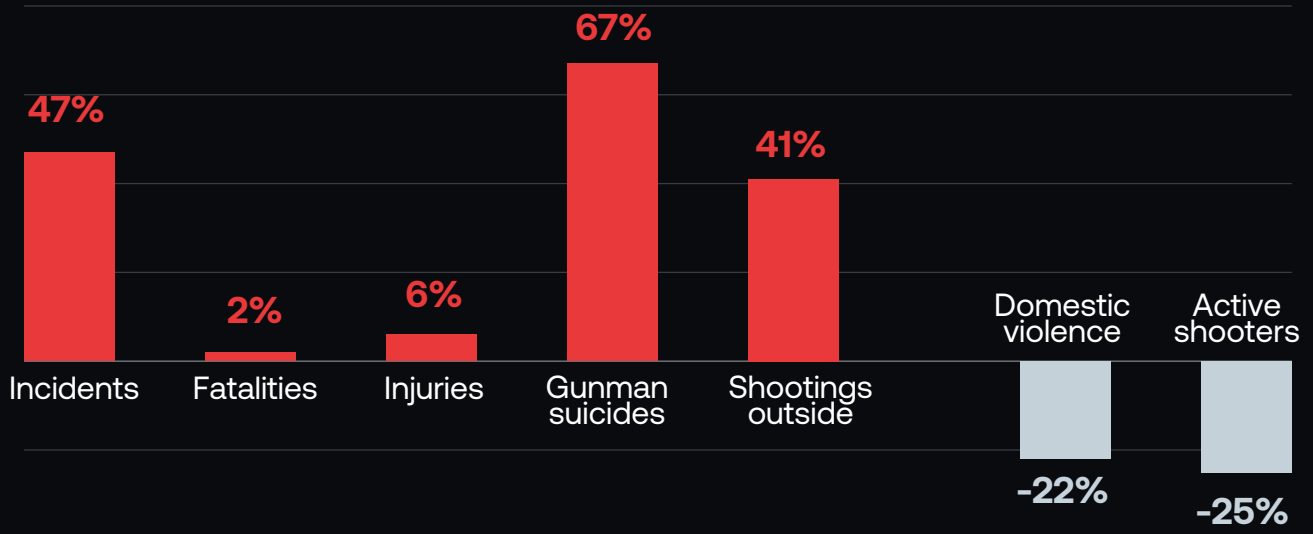
13 / Research methodology



KEY STATS

Comparing 2022/23 School Year to 2023/24

Across all education



Over the course of the 2022/23 to 2023/24 school years, we saw a 47% increase in gun violence incidents in education.

While gun violence in general on campus increased, situations that are deemed “active shooters” decreased by 25%. This decline in “mass shooting” incidents did not result in fewer fatalities or injuries, both of which still rose slightly.

Shootings that occurred outside of a campus building also continued to increase, as sporting events, playgrounds, courtyards, and parking lots all saw more gun violence incidents than in prior years.

KEY STATS

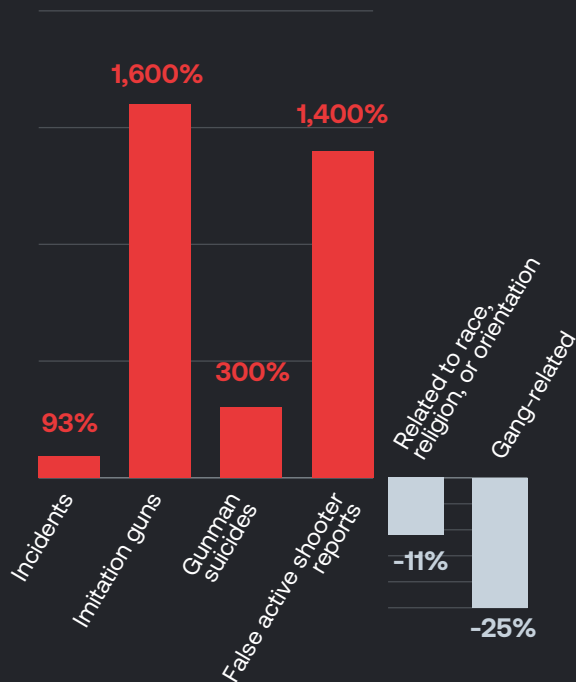
Comparing 2022/23 School Year to 2023/24

There are stark differences between K-12 and higher education incidents regarding how steep increases occur.

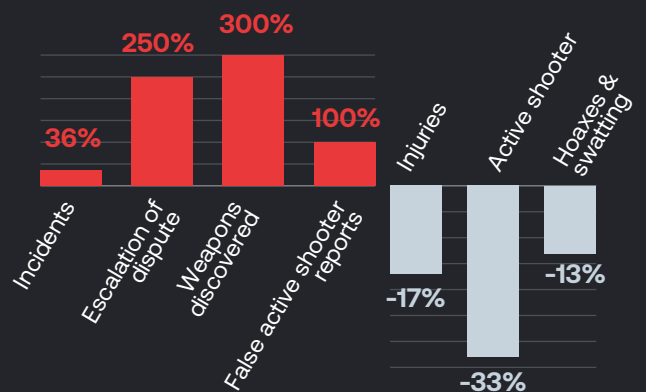
In K-12 institutions, there was a sharp increase in imitation guns and false active shooter reports. This contributed to physical, mental, and financial repercussions across the education community.

In higher education, there was an increase in gun violence incidents related to the escalation of a dispute, which is usually a form of spontaneous gun violence as opposed to a pre-planned attack.

K-12



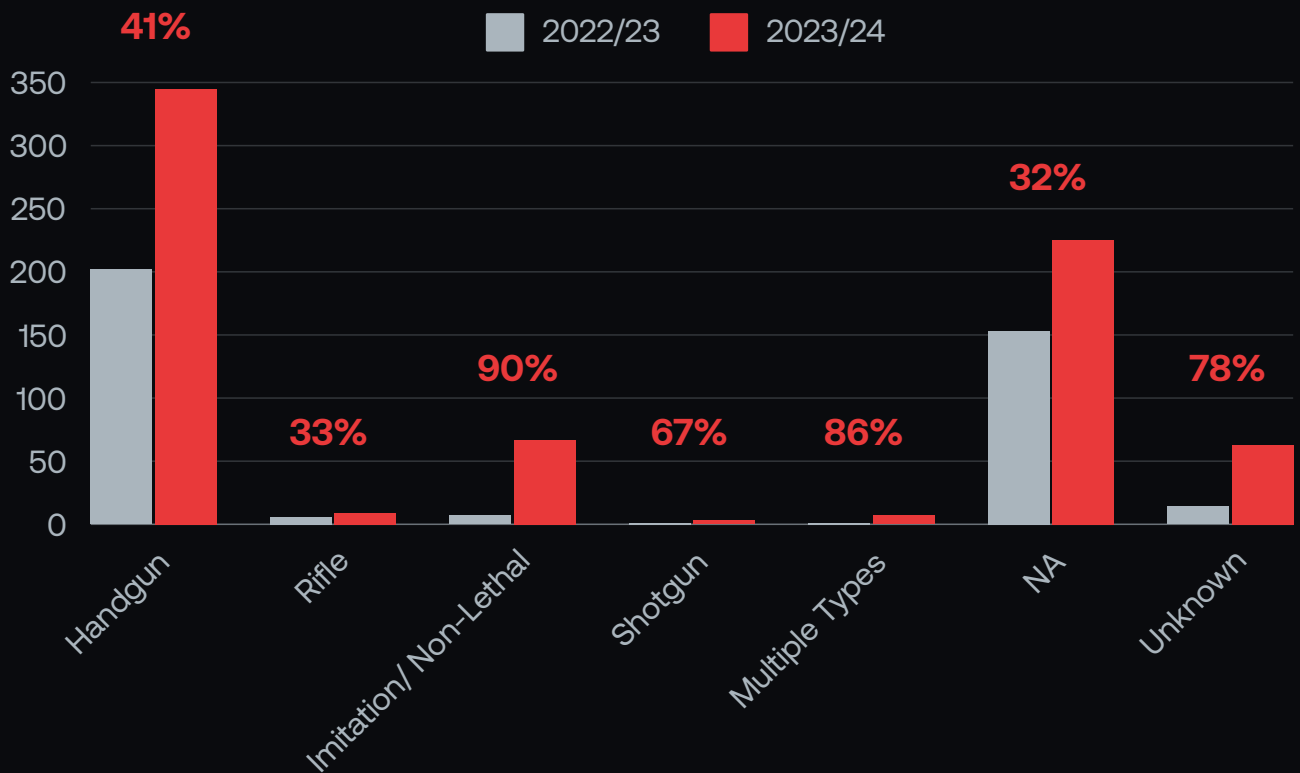
Higher Education



KEY STATS

Gun Violence Incidents by Gun Type

Across all education



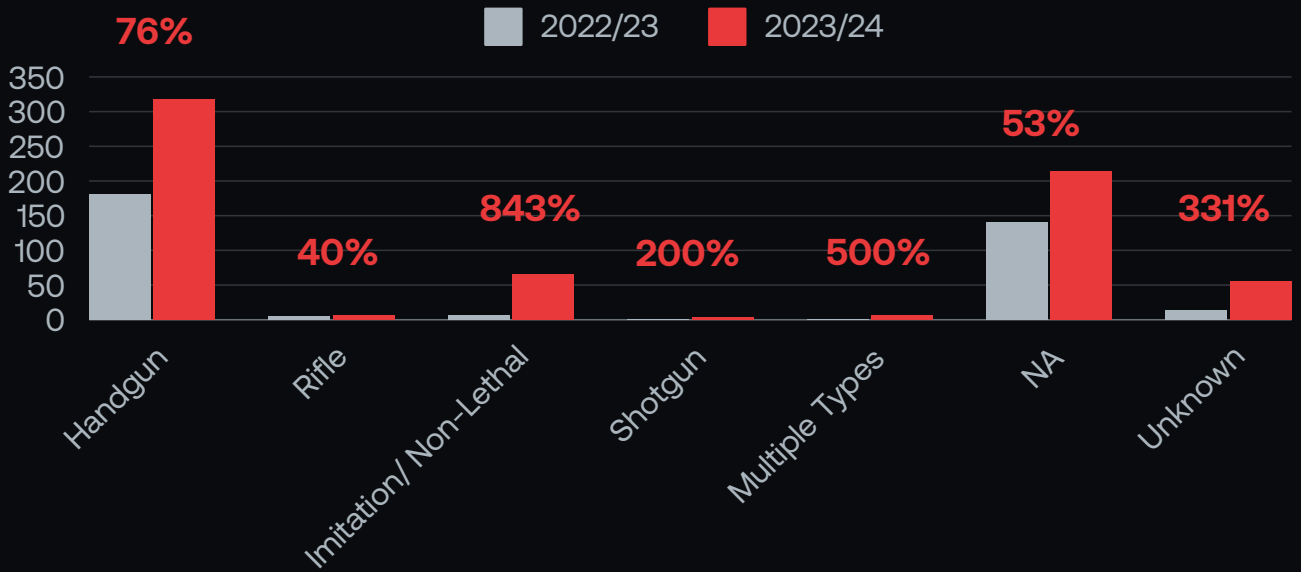
We saw an increase in gun violence incidents in education across every type of firearm. **The most significant increase was in non-lethal and imitation guns, with an increase of 89.6%.**

The rise in events like swatting, hoaxes, and live “games” like Senior Assassins has contributed to this increase. Firearms—including replicas, toys, and other “non-lethals”—are usually banned on school campuses to prevent mistaken identity, panic, and possible officer involvement.

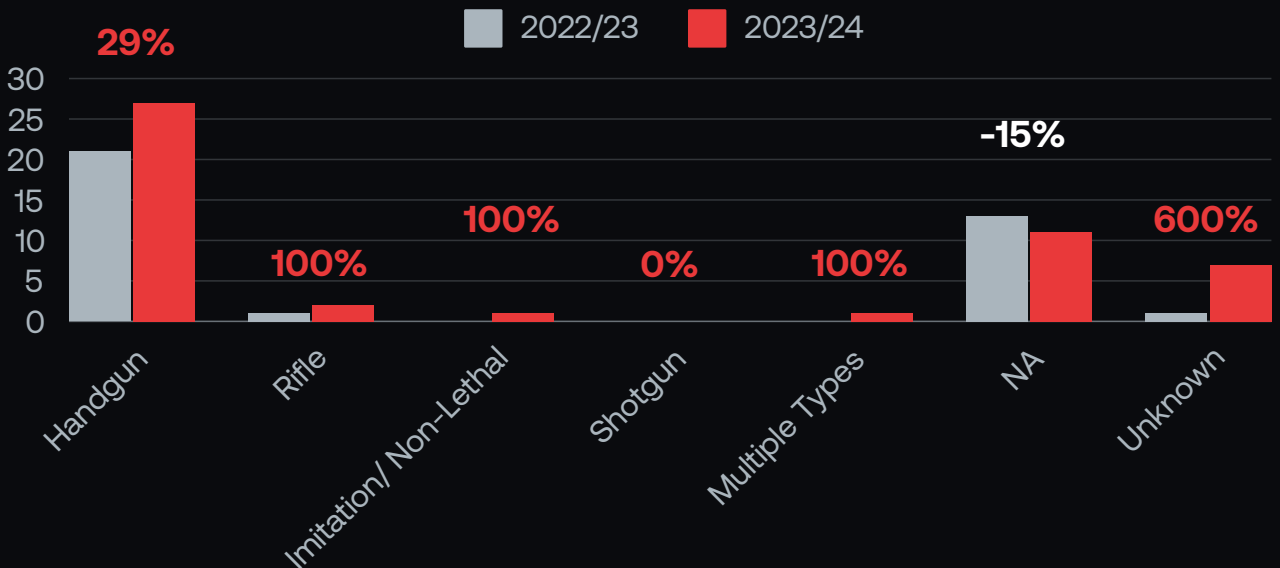
KEY STATS

Gun Violence Incidents by Gun Type

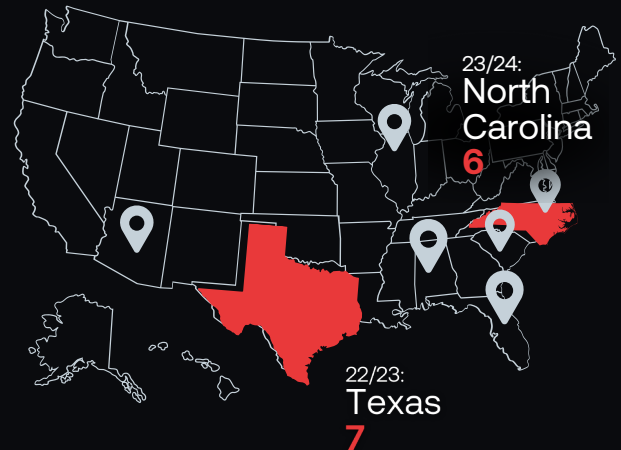
K12



Higher Education



States & Cities with the Most Gun Violence



K-12

Higher Education

States 2022/23
Florida
(30)

Cities 2022/23
Louisville, KY
(14)

States 2022/23
Texas
(7)

Cities 2022/23
Orangeburg, SC
Tallahassee, FL
Tuscon, AZ
(2 each)

2023/24
California
(63)

2023/24
Chicago, IL
Cincinnati, OH
Seattle, WA
(7 each)

2023/24
North Carolina
(6)

2023/24
Chapel Hill, NC
Chicago, IL
Huntsville, AL
Raleigh, NC
(2 each)

Notable Incidents

2022-2023

→ Robb Elementary School

Location and Date
Uvalde, Texas
5/24/2022

Day of the Week
Tuesday
11:30 AM

Victims
20 Fatalities
19 Injuries

Active Shooter Typology:
Frontal Assault

Weapon(s): **Rifle**

Location: **Inside**

Shooter Outcome: **Killed by LE**

→ Virginia Commonwealth University

Location and Date
Richmond, Virginia
6/6/2023

Day of the Week
Sunday
5:13 PM

Victims
2 Fatalities
5 Injuries

Active Shooter Typology:
Single Shooter Insider Attack

Weapon(s): **Handgun**

Location: **Outside**

Shooter Outcome: **Fled/Apprehended**



Notable Incidents

2023-2024

→ Perry Middle and High School

Location and Date
Perry, Iowa
1/4/2024

Day of the Week
Thursday
7:35 AM

Victims
2 Fatalities
6 Injuries

Active Shooter Typology:
Single Shooter Insider Attack

Weapon(s): **Handgun, IED**

Location: **Inside**

Shooter Outcome: **Suicide**

→ University of Nevada Las Vegas

Location and Date
Las Vegas, Nevada
12/6/2023

Day of the Week
Wednesday
11:45 AM

Victims
3 Fatalities
1 Injuries

Active Shooter Typology:
Frontal Assault

Weapon(s): **Handgun**

Location: **Outside**

Shooter Outcome: **Killed by LE**



Types of Gun Violence on Campus



Gun violence on campus takes many forms. While most people's minds immediately go to mass shooting incidents like Columbine, Sandy Hook, and Uvalde, the reality is there are hundreds of gun violence incidents on campuses per year that are not these scenarios.

We know that, for many in the education system, the threat of gun violence is ever-present. Threats, hoaxes, and swatting incidents continue to rise, often creating the same panic-inducing response of enacting "run, hide, fight" tactics or other plans that disrupt the school day and cause emotional trauma.

Gun violence can be classified in several ways, and includes active and inactive forms. Both types can lead to physical and mental trauma, financial consequences, and community impact.

[The real cost of gun violence →](#)

Inactive gun violence includes:

- ✘ Threats
- ✘ Hoaxes
- ✘ Swatting
- ✘ Non-lethal weapons mistaken for lethal ones
- ✘ Inaccurate reports

Active gun violence is categorized into **unplanned** and **planned** incidents.



Unplanned incidents make up the majority of gun violence in the country, including on campus. Unplanned, or spontaneous gun violence, is often the result of an escalation of a dispute, criminal activity, or domestic violence.

Unplanned gun violence is frequently mistaken for planned attacks, often referred to as active shooters. This inaccurate report can cause unnecessary chaos, injuries, and even fatalities. It also costs organizations and individuals billions of dollars in losses each year.

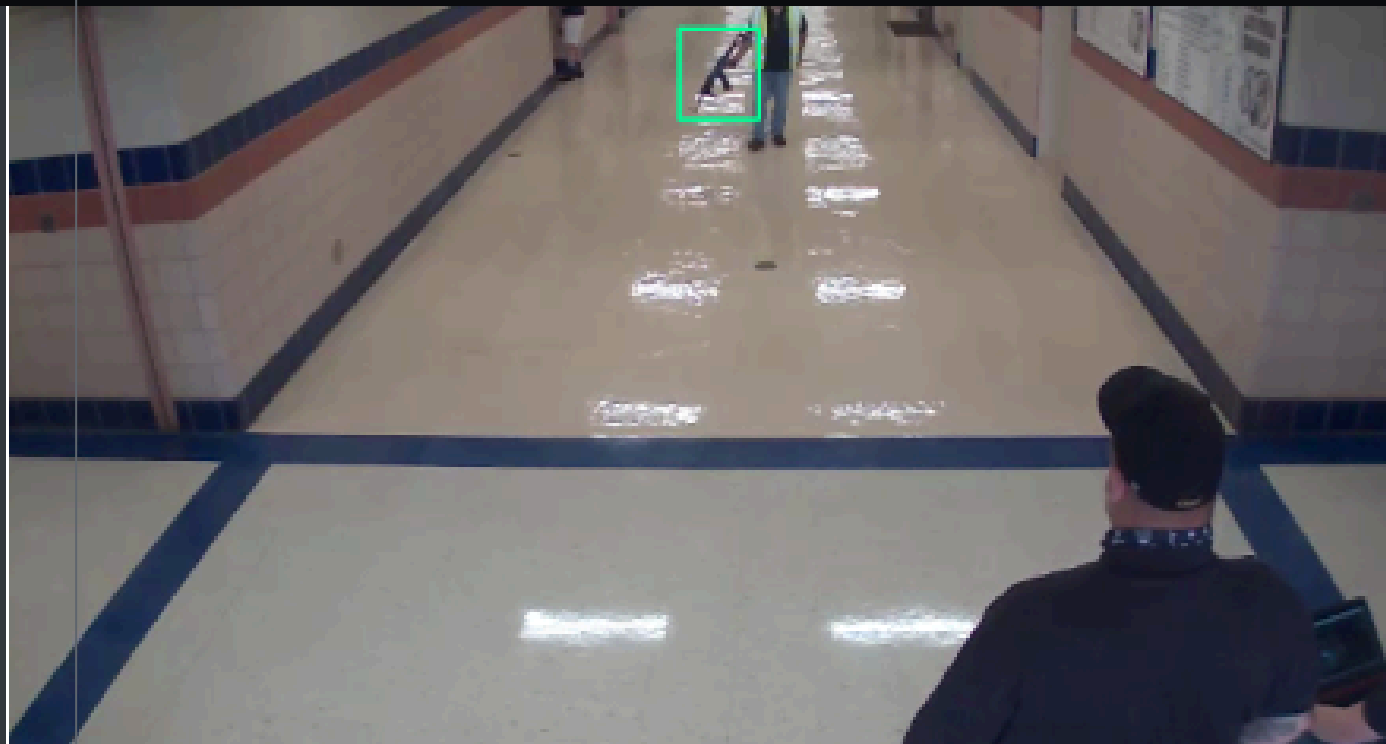
[The cost of gun violence on campus →](#)

Planned gun violence is what most of us are accustomed to hearing about in the media. It includes mass shootings, targeted murders, and other scenarios.

Planned gun violence has nine different scenarios, including:

- Single shooter insider attack
- Multiple shooter insider attack
- Sniper
- Ambush
- Assassination
- Siege
- Hostage taking
- Complex coordinated attack
- Criminal activity

[Active Shooter Typology Report →](#)





Data Collection & Research Methodology

The ZeroEyes Gun Violence Research Center is a comprehensive look at all forms of gun violence across all industries in the United States. Below is an overview of the types of information that is analyzed for each incident.

Demographics & Basics

- Country
- State
- City
- Industry
- Latitude
- Longitude
- Time incident began
- Time of day (morning, afternoon, evening, night)
- Date
- Day of the week

Location Specifics

- Type of business / organization / space
- Inside / outside / both
- Public, private, or restricted access



Incident Details

Gun Violence Type

- Spontaneous
- Targeted
- Active Shooter
- Threats
- Hoaxes
- Swatting
- Perceived
- False Alarms
- Criminal

Situation Analysis

- Escalation of a dispute
- Illegal activity
- Domestic violence
- Drive-by-shooting
- Hostage / standoff
- Murder / suicide
- Self defense
- Psychosis
- Indiscriminate shooting
- and more

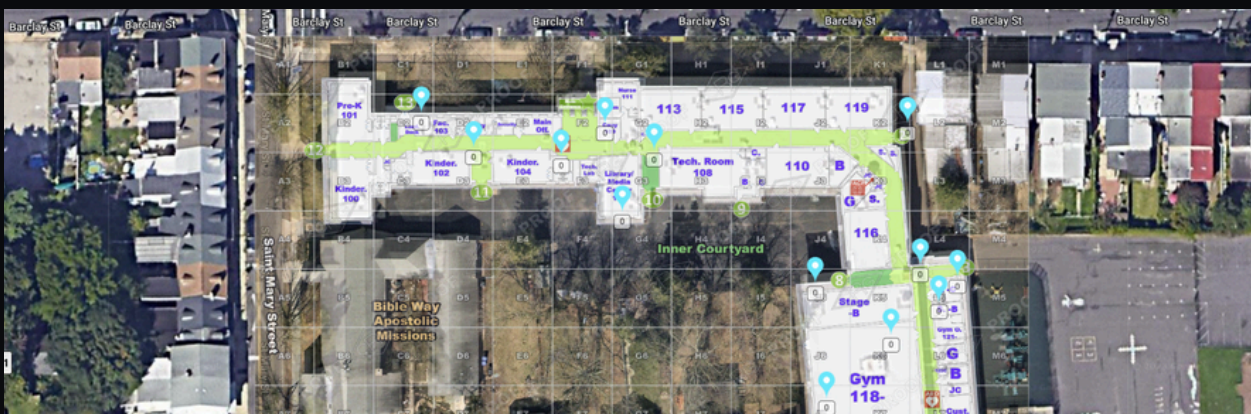
Pre-planned attack

- Planning type
- Gun visible on CCTV prior to shooting
- Gun brandished prior to shooting

Victimology

- Injuries
- Fatalities
- Affiliation to shooter
- Domestic Violence
- Targeted race, religion, or orientation

Gang-related incidents defined as “Active Shooter” scenario by the FBI



Shooter Analysis

Shooter Typology

Active Shooter Assault Type

- Frontal assault
- Insider attack – Single shooter
- Insider attack – Multiple shooters
- Sniper
- Assassination / Ambush
- Hostage taking
- Criminal activity
- Siege
- Complex coordinated attack

Shooter Gender

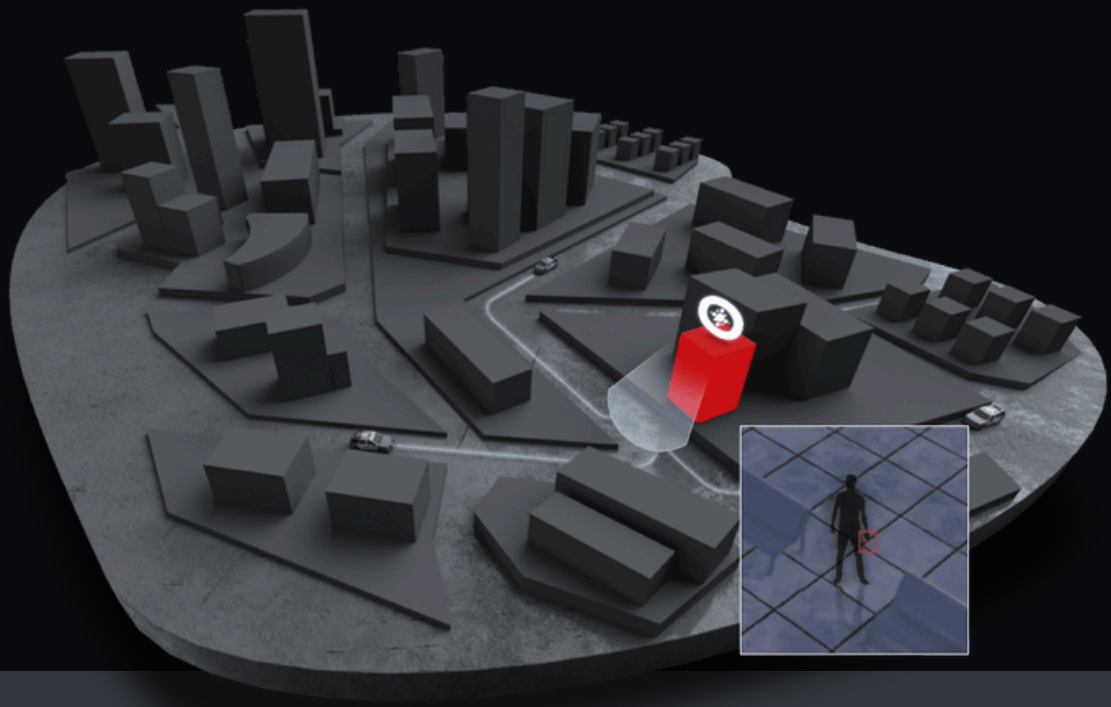
Shooter Relationship to Location

Shooter Outcome

- Surrendered
- Fled – Escaped
- Fled – Apprehended
- Apprehended at scene
- Killed by law enforcement, security guard, or other
- Law enforcement involved shooting
- Subdued by bystander / staff
- Suicide
- Attempted suicide
- Other

Type of Gun(s)





Response Analysis

Reporting Type

- 911 Call
- Law enforcement on scene
- In-person notification
- Social media

Response Size

- Acute
- Mid-size
- Large
- Escalation

Response Time

Agency Type

- Internal
- Local law enforcement
- State law enforcement
- Federal law enforcement
- Combination of local, state, and/or federal law enforcement

EMS access conflict

Closure type

- Entire facility
- Sectioned off at shooting location

Length of closure



See a Live Gun Detection Demonstration

Speak with a ZeroEyes specialist in your state and see gun detection in action.

[BOOK YOUR DEMO](#)

